



SERN

PRESENTATION PROJECT RESULTS

12 MAY 2022

Lilla Bommens Conference Center
Gothenburg



Part Her

THE EUROPEAN CULTURAL HERITAGE
FROM THE CITIZENS' PERSPECTIVE

Project background

- Need to reframe cultural heritage as a social construction resulting from the perceptions, values, sensitivities of local communities.
- Strengthen the link between cultural heritage, identified and perceived by people, and the democratic roots of Europe.
- There is a need to define participatory processes, tools and outputs providing an innovative approach to cultural heritage.

»»» Cultural heritage conservation and valorisation should not be seen as a top-down process but as a process that includes the inputs and proposals coming from citizens (bottom-up).

Main objective and how Part Her acted

To contribute to the development at European level of a participated approach to cultural heritage as a key factor for a shared identity

- Part-her has contributed to fostering the role of citizens in identifying the tangible and intangible cultural heritage of their territory, while increasing local communities' self-confidence and empowerment;
- Part-her has promoted reflection and debate about a common (European) view of cultural heritage stemming from citizens' perspective;

Partnerships



**Sweden Emilia Romagna
Network**

Italy



Città di Parma

Italy



Linköping

Sweden



Denia

Spain



Tours

France



Konavle

Croatia

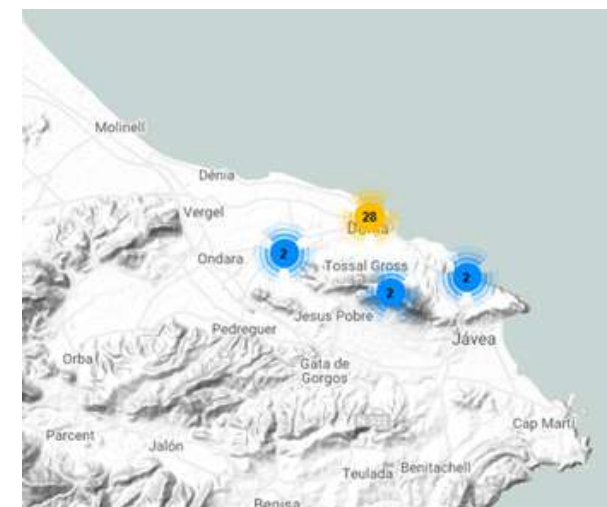
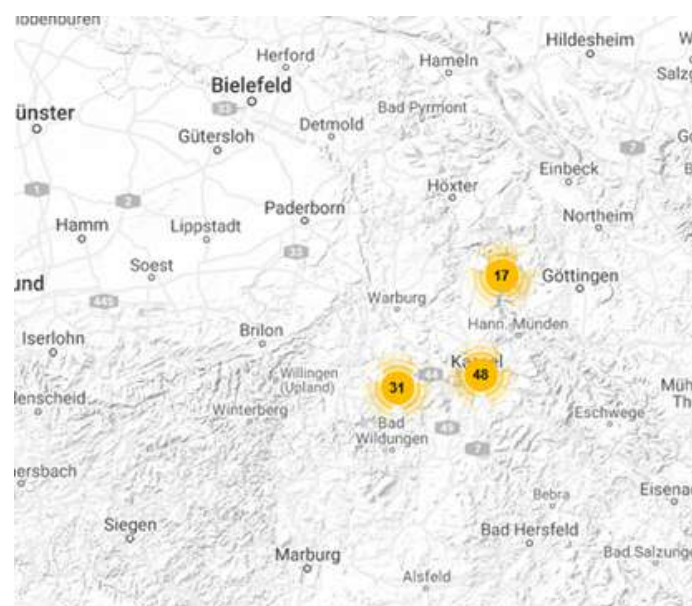


Kassel

Germany

Results achieved

- A website/platform with contributions from citizens in different languages;
- Approximately 900 contributions from citizens of 6 countries



Results achieved

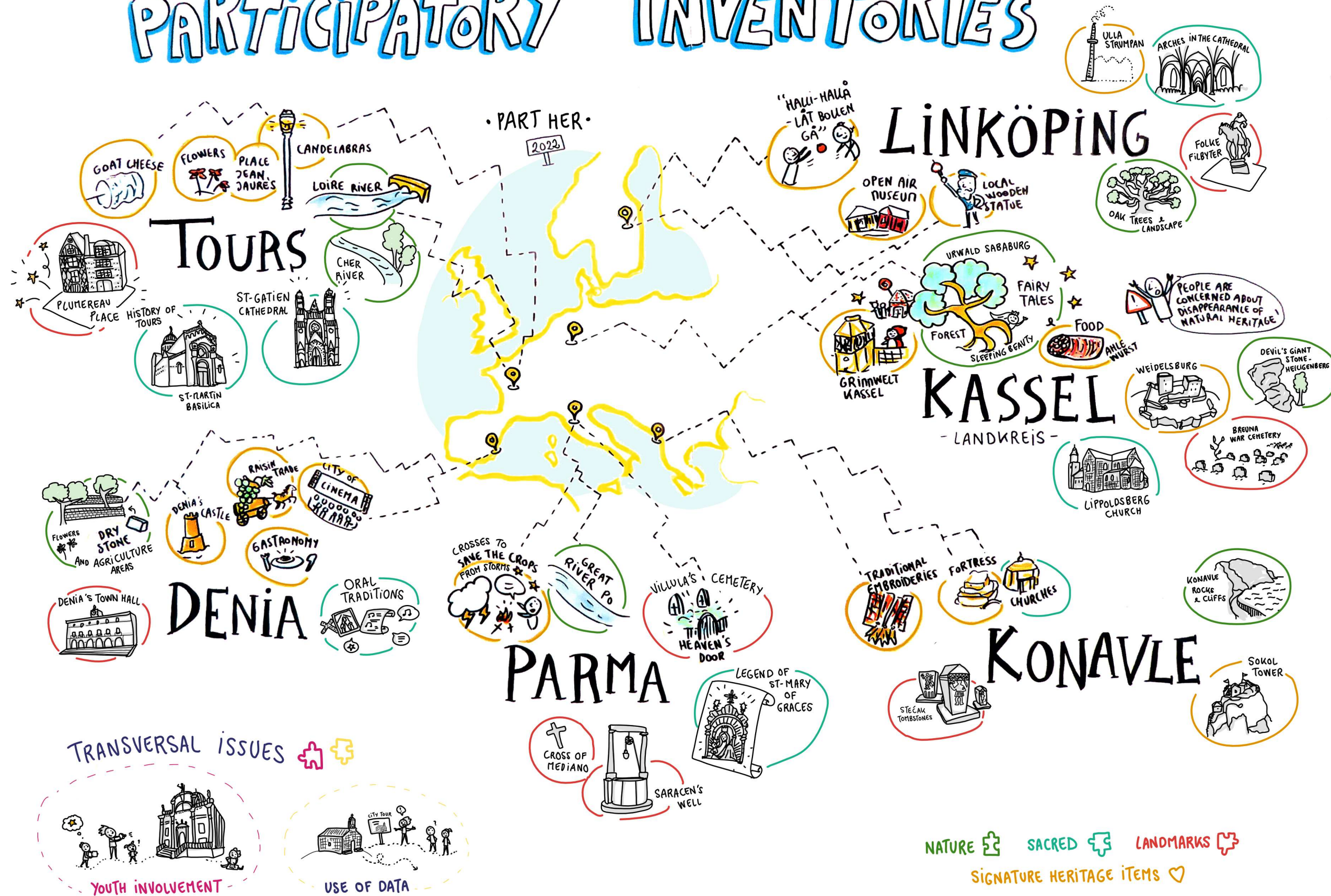


Identification of **5 elements** of reflection at transnational level pertaining cultural heritage emerged from the bottom-up process tested in the project:

- 2 horizontal aspects: youth involvement and use of the data
- 3 elements linked to the most recurring categories pointed out by citizens: **Sacred**, **Landmark** and **Nature**



PARTICIPATORY INVENTORIES



Methodology - use of a digital platform

- The digital platform is
- a concrete tool aimed at pointing out those goods, those traditions (written and oral), those knowledges, those places in which citizens reflect own sense of belonging
- a useful tool that allows to save and hand over what has been pointed out to future generations

Part Her

[Home](#) [Project](#) [Partners](#) [Project Activities](#) [Contact Us](#) [TAKE PART](#)

Be part of the project!

Be part of the project!

What is your city renowned for? What does it mean being from (Name of the città)? What makes your city unique? What would you like to pass on to future generations?

These are the questions YOU are going to answer, because YOU are the ones who live and experience the city on a daily basis.

The inhabitants are the creators, the witnesses and the guarantors of their cultural heritage. That is why they are at the heart of this process.

This platform is giving you the opportunity to share what you think characterizes your city ; it can be a monument, a tradition, a symbol, a culinary specialty or even a traditional feast ... Your contribution will help to identify the elements that are shaping your city's cultural identity and are at the basis of a shared sense of belonging.

This simple operation is part of an extremely important participative, democratic process. It contributes to the long term appropriation and valorization of heritage by the inhabitants, and fosters a sense of responsibility in its conservation. Heritage is increasingly being recognized in the European Union as a major feature for local development and peoples' well-being.

This project enables building a common approach about heritage as a basis for local development and well-being, thus leading to foster a sense of belonging to a common European space. It has also been thought as a benchmark in terms of good practices, capacity-building and knowledge-sharing that will create a ground for profitable exchange.



HOW?

How the platform works

On the platform, which has been created digitally, it is possible to **report**, using a form with the various **categories** of items, everything that is considered culturally important and that characterises and identifies a specific community.

The importance of these **cultural items** is not necessarily determined by a historical-artistic value but rather by an **identity value of a community**, which this items represents.

This item may be material (from a building to everyday objects or even games) or immaterial (legends, traditional songs, oral expressions, rites or rituals that are not necessarily religious)

Browse the Part Her Platform

WWW.PARTHER.EU/

Part Her  Delta också Projektet Parther.eu SV▼

1  Vad vill du kalla ditt förslag? *

2  Inom vilket område vill du lämna ett förslag? *

<input type="radio"/> Fester och högtider	<input type="radio"/> Religiöst kulturarv och ritualer
<input type="radio"/> Musik/ föreställningar/ festivaler	<input type="radio"/> Symboler
<input type="radio"/> Platser/ vägar	<input type="radio"/> Byggnader/ monument / fornlämn...
<input type="radio"/> Konsthantverk/ hantverk/ tekniker	<input type="radio"/> Marknader
<input type="radio"/> Lekar	<input type="radio"/> Matkultur

Qui  prima e poi 1 Dai un nome alla tua proposta *

2  Cosa vuoi segnalare? *

<input type="checkbox"/> Personalità importanti della storia...	<input type="checkbox"/> Opera
<input type="checkbox"/> Natura / Paesaggio	<input type="checkbox"/> Edifici
<input type="checkbox"/> Giocattoli tradizionali e popolari	<input type="checkbox"/> Festa o Celebrazione
<input type="checkbox"/> Mercato o commercio	<input type="checkbox"/> Lavoro
<input type="checkbox"/> Gioco	<input type="checkbox"/> Religiosità e culto
<input type="checkbox"/> Alimentazione e cucina	<input type="checkbox"/> Musica e spettacolo

PROJECT PUBLICATION ON THE DEDICATED WEBSITE



Laura Avanzi

SERN Secretariat



**THANK
YOU!**