

Building capacity for Erasmus+ in school education





LULEÅ KOMMUN

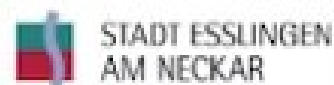
Joakim Hellgren

Senior Lecturer / Developer
Department of Education
Municipality of Luleå



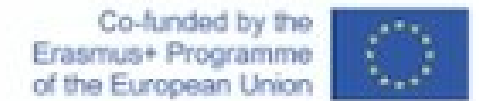
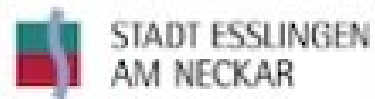
BE+

Capacity Building in Schools for Erasmus+ participation



Co-funded by the
Erasmus+ Programme
of the European Union





Partners:

- Norrköping - owner of project
- Luleå
- Trondheim
- Esslingen am Neckar
- SERN
- Collechio, Ettore Guatelli

BE+

Purpose and goals



LULEÅ KOMMUN

- To increase the administrative and organisational capacity for participation in transnational projects within Erasmus+
- To develop how schools identify their needs for transnational development work

BE+

Purpose and goals



LULEÅ KOMMUN

- To develop the competence of school staff in using and understanding project cycle management
- Develop a toolkit that prepares schools and school staff for transnational collaborations
- Increased opportunities for our schools to participate in international exchange

Building capacity for Erasmus+ in school education



Activities:

- Transnational Project Meetings
- Intellectual outputs: IO 1, 2, 3
- Learning Teaching and Training activities: 2x LTTa
- Multiplier events



What are the expected results by the end of the project



A Self-Assessment guide for
need analysis in Schools

[Learn more](#)



A training course on capacity
building

[Learn more](#)



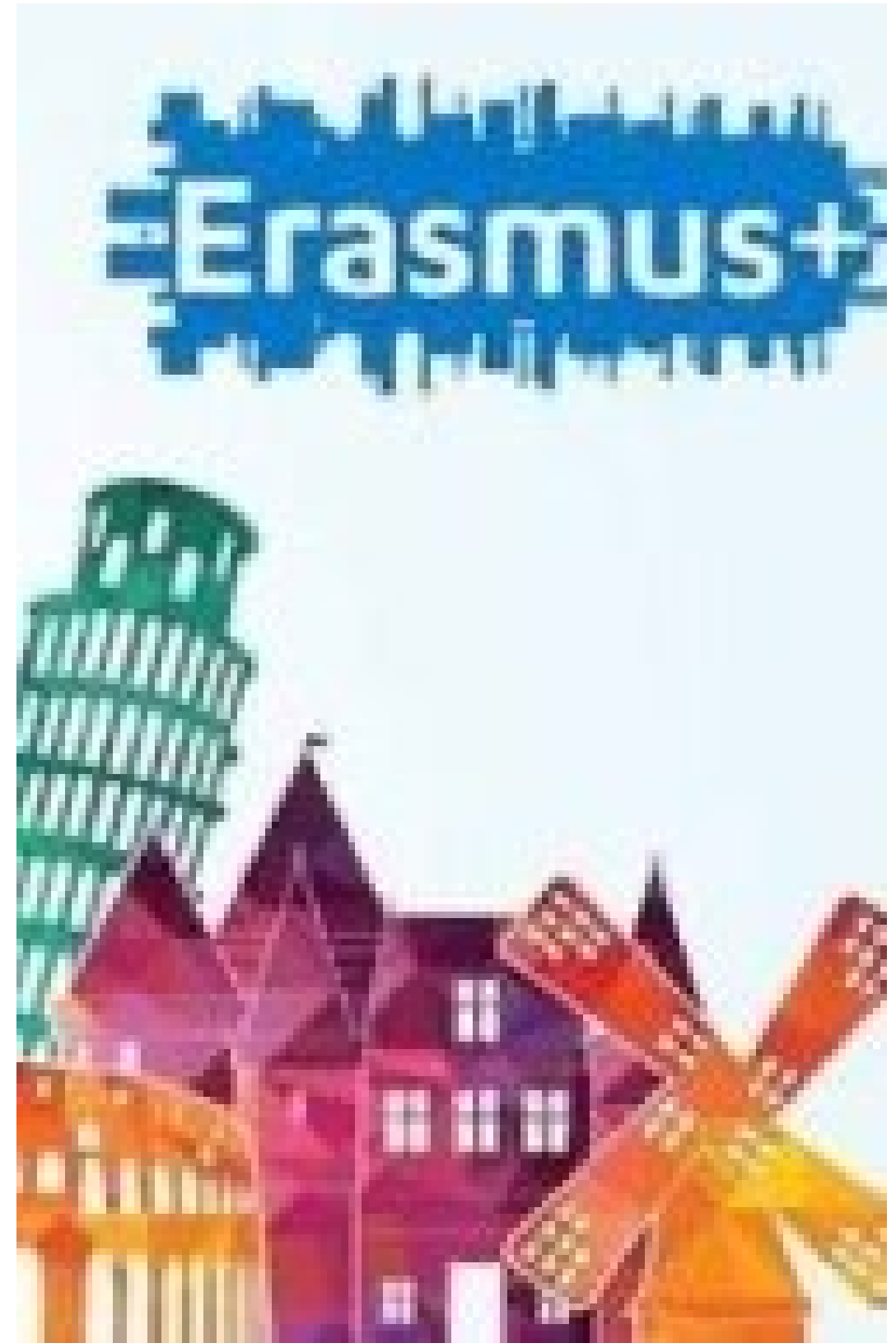
A Capacity Building Toolbox
for schools

[Learn more](#)

Desired Results

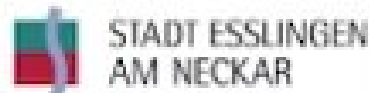
With help from tools and methods produced in BE+ we want that:

More schools participate in transnational collaborations, with a greater knowledge of their opportunities, what they want to achieve and how to do it.



För mer information om BE+

- <https://www.sern.eu/project/be-building-capacity-for-erasmus-in-school-education/>
- <https://www.facebook.com/beplusproject>
- joakim.hellgren@skol.lulea.se



Co-funded by the
Erasmus+ Programme
of the European Union



