

THINK GLOBALLY, ACT LOCALLY THROUGH THE LOCAL GREEN DEALS

11 May 2023
Cervia

The European Green Deal is the European Commission's **global growth framework** that also aims to make Europe the first **climate-neutral continent by 2050**.



The European Green Deal will improve the well-being and health of citizens and future generations by providing:



FRESH AIR, CLEAN
WATER, HEALTHY SOIL
AND BIODIVERSITY



RENOVATED,
ENERGY EFFICIENT
BUILDINGS



HEALTHY AND
AFFORDABLE
FOOD



MORE PUBLIC
TRANSPORT



CLEANER ENERGY AND
CUTTING-EDGE CLEAN
TECHNOLOGICAL
INNOVATION



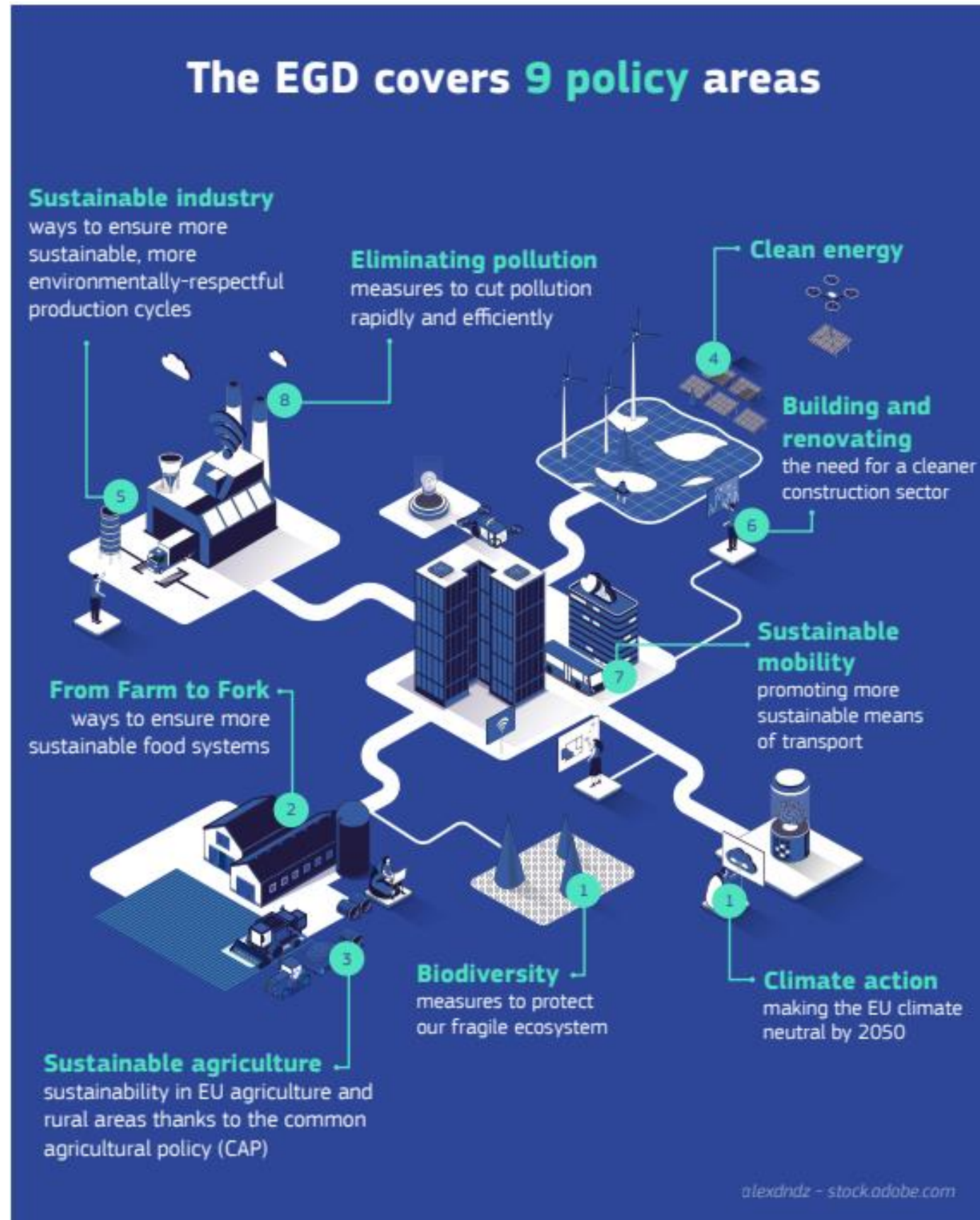
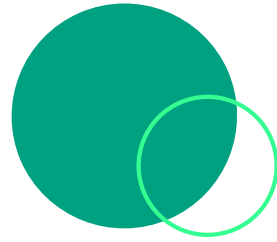
LONGER LASTING
PRODUCTS THAT CAN
BE REPAIRED,
RECYCLED AND RE-
USED



FUTURE-PROOF
JOBS AND SKILLS
TRAINING FOR THE
TRANSITION



GLOBALLY
COMPETITIVE AND
RESILIENT INDUSTRY



SUSTAINABLE INDUSTRY

ELIMINATING POLLUTION

CLEAN ENERGY

BUILDING AND RENOVATING

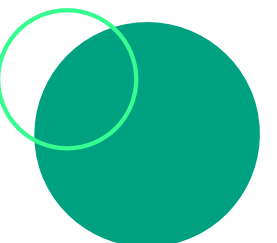
SUSTAINABLE MOBILITY

CLIMATE ACTION

BIODIVERSITY

SUSTAINABLE AGRICULTURE

FROM FARM TO FORK



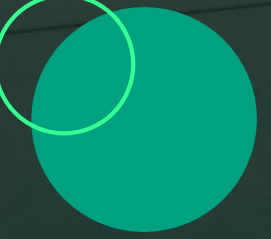



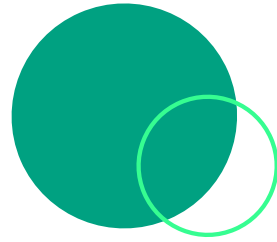
Going local

The Local Green Deals (LGDs) are the **local response** to the European Green Deal.

Local Green Deals are **agreements** going far beyond the usual ‘action planning’ approach.

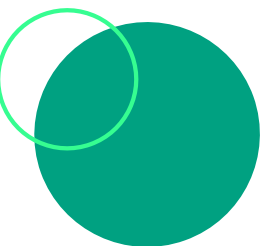
Together with local businesses, stakeholder organisations and civil society initiatives, local governments agree to initiatives supporting the city's sustainability goals.





The LGDs are built on engaging and formalising **new working relationships** with these groups.

They are **tailored** to each context and specificities, built on the **commitment of local actors**, and are guided by the principles of inclusivity, accountability, transparency and equity.





KEY PRINCIPLES



BUILD ON WHAT IS ALREADY THERE

Bring policies, strategies, and initiatives in place to support sustainable development together in a coherent way

AN INTEGRATED APPROACH

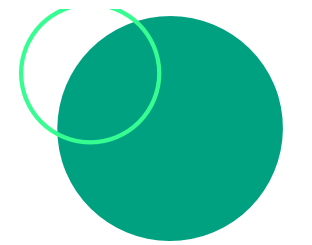
Horizontal coordination in governance will be required, as many cross-cutting sustainability issues need to be addressed with, or require the cooperation of, different departments in a Municipality.

A COLLABORATIVE APPROACH

LGDs will require cooperation with local stakeholders.

The local authorities can bring together local service providers from different sectors to provide cross-cutting solutions to meet local needs.





LINING /
 SS-CUTTING WORK
 INSIDE THE ORGANISATION



LGD STEPS

1



SETTING THE STAGE

Identify one (or more) area(s)
for your LGD

2



PLAN AND DESIGN

MAPPING

- Stakeholders
- Initiatives
- Strategies

TIMEFRAME

PARTNERSHIPS

3



IDENTIFY COMMON GOALS

SEMINAR

With Stakeholders

4



RECRUIT AND SELECT DEAL APPLICANTS

Extend invitation to
join the deal and
define activities
with each of the
selected local
stakeholders

5



DEALMAKING

Sign the deal,
communicate about
it.

7



EVALUATION

Assess results
Write evaluation
and communicate
achievements
Update Deals

6



IMPLEMENTATION

Implement deal
activities and
monitor progress





 secretariat@sern.eu

 www.sern.eu

 facebook.com/sern2.0

 linkedin.com/company/sern